

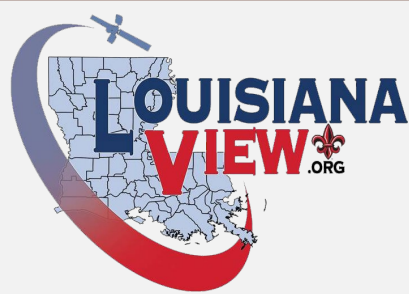
# 27<sup>th</sup> Annual Disaster Response/Data Mining Geospatial Workshop

*UL Lafayette Regional Application Center  
University of Louisiana at Lafayette*

June 4 & 5



# 2026



# 27<sup>th</sup> anniversary of disaster response

***Thank you for participating in our 27th Annual Disaster Response/ Data Mining Geospatial workshop. 2026 marks 27 years of dedicated service to Louisiana, Gulf Coast States, the Caribbean and all geospatial first responders utilizing geospatial technology for preparedness and resilience. This annual event is crafted to build a culture of preparedness, strengthen communities, and increase resilience nationwide. Our hybrid In-Person/Virtual Workshop illustrated advancements by individuals and agencies in geospatial response technology engaging GIS professionals from around the globe. The expansion of this workshop over the past 27 years has continued to build and support our geospatial responder community and allowed more individuals to be part of a growing activation and outreach for emergency response. Our workshop hosted 253 attendees; 113 in person and 140 virtually, representing 17 countries and 27 U.S. states and territories. This workshop allowed face-to-face engagement with representatives from the federal, state, and local emergency response communities while allowing participation virtually to geospatial emergency responders across the globe. In this brochure, you will find the agenda for each day's activities, presenters' bios, along with a summary and related links for all presentations and agency data covered in this year's workshop.***



# Workshop Coordinators



***Rodney B. Yantis, MLA***

*Director*

UL Lafayette Regional Application  
Center, LouisianaView

*Rodney Yantis is the Director of the NASA/UL Lafayette Regional Application Center located in the Research Park of the University of Louisiana at Lafayette. He has a Bachelor's degree in Agriculture and a Master's Degree in Landscape Architecture: Landscape Ecology/GIS and Remote Sensing from Louisiana State University. He is currently the board chair of the National AmericaView program; Director of LouisianaView; State Contractor to the Louisiana Army National Guard; Contractor to the USGS WARC; NOAA Weather Ready Nation Ambassador, and a project manager for the International Charter Space and Major Disasters.*

***Michelle Fischer***

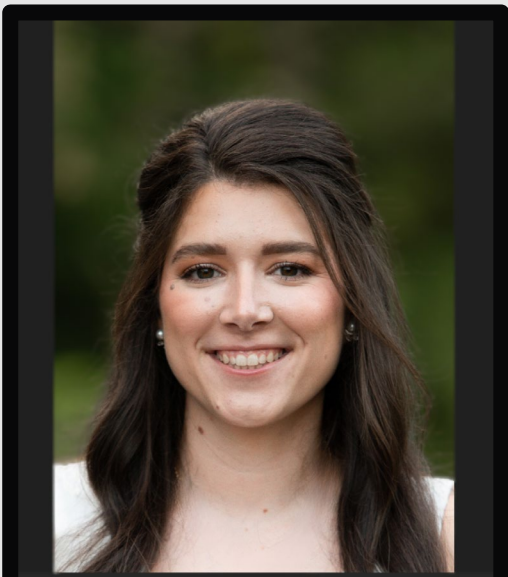
*National Map Liaison – LA, AL, AR,  
MS, OK, TX*

United States Geological Survey



*Michelle Fischer began her career as a geographer with the USGS in 2008 at the National Wetlands Research Center, now known as the Wetland and Aquatic Research Center, where she served as the geospatial team lead for restoration efforts in Louisiana and the Gulf Coast. She joined the National Geospatial Program, User Engagement team in December 2023, where she serves as the National Map Liaison to Alabama, Arkansas, Louisiana, Mississippi, Oklahoma, and Texas. She works to develop partnerships and data acquisition agreements in those states to ensure the availability of elevation and hydrography datasets for a broad range of users and applications.*

# Workshop Coordinators



***Dr. Courtney Poirier Chicola***

*Postdoctoral Researcher*

*UL Lafayette Regional Application  
Center, LouisianaView*

*Dr. Courtney is a postdoctoral researcher at the Regional Application Center located in the Research Park of the University of Louisiana at Lafayette. She has a Bachelor's degree in Environmental Science, Master's degree in Environmental Resource Science, and a PhD in Earth and Energy Sciences from the University of Louisiana at Lafayette. Her interdisciplinary research spans ecohydrology, atmospheric chemistry, geoscience education, disaster response, and GIS/remote sensing applications. She teaches courses in GIS, remote sensing, and AI integration in geospatial workflows. As a member of the National AmericaView and LouisianaView program, she coordinates education outreach materials including the traveling Earth as Art exhibit and an undergraduate research mentorship and workforce development program focusing on earth observation and geosciences.*

***Rusti Liner, GISP***

*Associate Professor, Geography  
Chair, Safety & Emergency  
Preparedness Committee  
River Parishes Community College*



*Professor Liner teaches Geography and Emergency Management courses at River Parishes Community College and Dillard University. She has been teaching college courses since 2010. In 2006, she was promoted to Geospatial Unit Lead for the Hurricane Katrina recovery team in Baton Rouge, LA. She worked for three years in this role and supported 15 other nationally declared disasters from 2004 to 2009. At RPCC, she has developed a concentration of Emergency Management that allows General Studies majors to take up to 18 hours of courses and participate in internship opportunities in various disaster programs across the nation. She is a proud supporter of QGIS and uses it exclusively in her interactive GIS courses. She recently co-authored two OER textbooks for World Regional Geography and Cultural Geography.*

# Table of Contents

*June 4, 2026 (Day 1)*

## *Morning Sessions I (9:20 am – 10:20 am) 9-11*

*Tim Osborn ----- 9*

NOAA Office of Coast Survey

*Megan Williams ----- 10*

NWS

*David Schlotzhauer ----- 11*

NWS

## *Morning Sessions II (10:40 am – 12:00 pm) 12-13*

*Mike Budde ----- 12*

USGS EROS & International Charter

*Timothy Newman ----- 13*

USGS NLI

## *Afternoon Sessions I (1:15 pm – 2:40 pm) 14-16*

*Ronan Lucey ----- 14*

NASA Marshall Space Flight Center

*Kurtis Nelson ----- 15*

USGS Fire Science Team

*Jenny Hewson ----- 16*

NASA's LANCE

# Table of Contents

*June 4, 2026 (Day 1)*

*Afternoon Sessions II (3:00 pm – 5:00 pm) 17-21*

<i>George Femmer</i> -----	<i>17</i>
Drone Institute	
<i>Jason Carr</i> -----	<i>18</i>
LA DOTD	
<i>Maik Flanagan</i> -----	<i>19</i>
USACE	
<i>Jason Granados-Barrios</i> -----	<i>20</i>
USACE	
<i>Hazem Mahmoud</i> -----	<i>21</i>
NASA’s Atmospheric Science Data Center (ASDC)	

*June 5, 2026 (Day 2)*

*GIS Training Session (9:00 am – 12:00 pm) 22-24*

<i>Joseph “Brig” Bowles</i> -----	<i>22</i>
ESRI	
<i>Greg Hymel</i> -----	<i>23</i>
ESRI	
<i>Trish Zwolinski</i> -----	<i>24</i>
ESRI	

# Table of Contents

## *Workshop Resources*

*Data Links* 25-39

*Survey/Website* 40

*Thank You Letter* 41

*Sponsors and Vendors* 42-44

*Workshop Highlights* 45-49

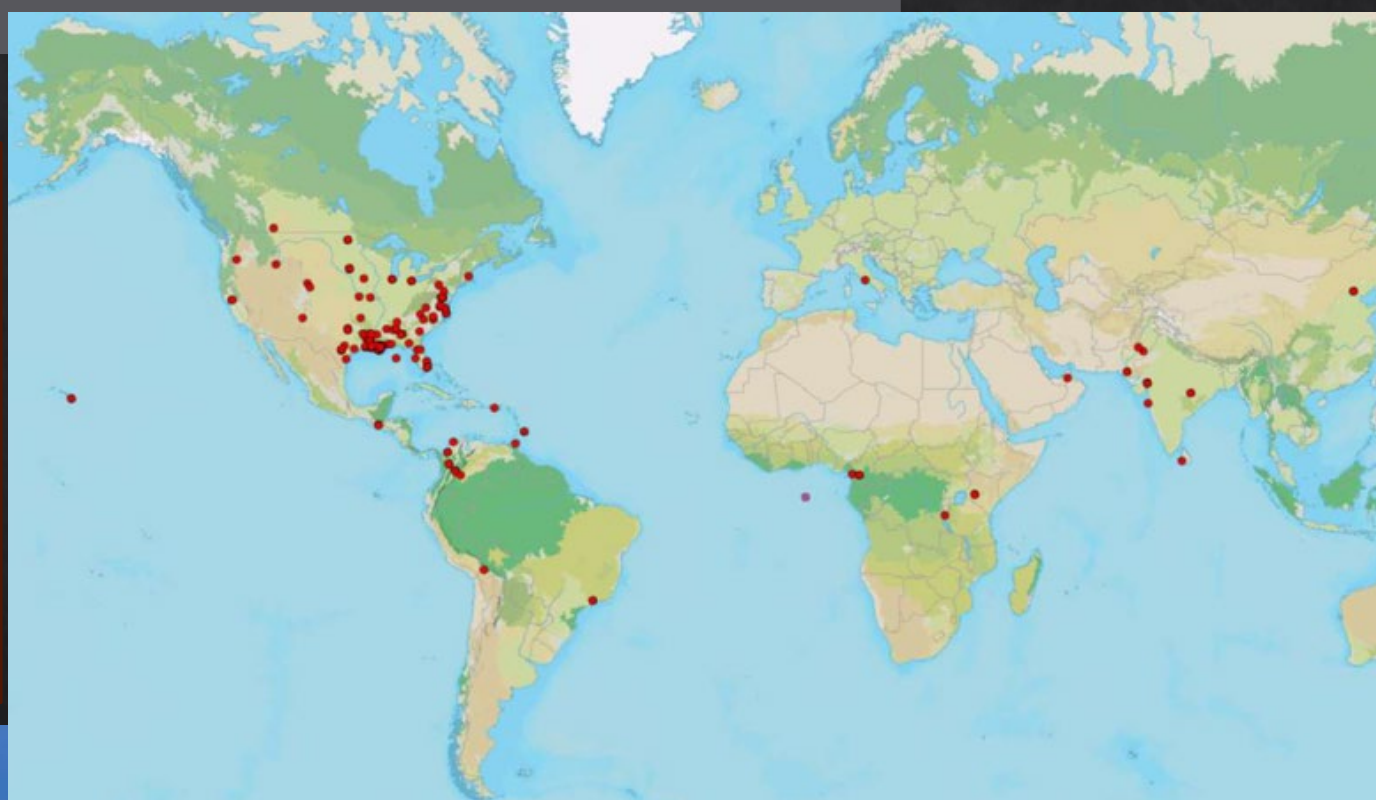
*Donation Information* 50

## *June 4-5<sup>th</sup>, Days of the Workshop*

*The 2026 annual Disaster Workshop, 27th in the series, was held on June 4-5<sup>th</sup> at the Louisiana Immersive Technologies Enterprise (LITE) Center/Regional Application Center near the Lafayette Cajundome. This workshop continued our offering of a half-day free training, conducted by ESRI, entitled: Widgets, Widgets, Widgets in ArcGIS Experience Builder, allowing the participant to create an immersive web experience for their audience by unifying web apps, web pages, interactive widgets, and both 2D and 3D data through a flexible drag-and-drop interface.*



*The red dots on the map (right) indicate the locations of registered attendees at this year's workshop.*



*You can access the 2026 Disaster Workshop Files and Recordings using the link provided.*

*<https://louisianaview.wordpress.com/2026/04/27/2026-disaster-response-workshop/>*



***Tim Osborn***

*Central Gulf Coast Regional Navigation Manager  
NOAA Office of Coast Survey*

*Tim oversees surveying and mapping of Gulf Coast waters, navigation channels, ports, waterways, and coordinates the NOAA OCS response activities during hurricanes and severe incidents. He participates in the planning and implementation of new programs such as densification of NOAA's tides and water level programs and installations (including PORTS and IOOS-related activities) in the Gulf of Mexico. He works with local, state, and coastal communities on coastal projects, including restoration projects, artificial reef programs, new navigation and port installations, and the surveying and mapping of marine debris.*

***Presentation Title:***

*Time Is Of The Essence, Action and Response Is Wherever You Are, A New Generation Of Autonomous Technology and Deployment Is Here Now*

***Link to Slides:***

[https://louisianaview.wordpress.com/wp-content/uploads/2026/04/1\\_the-geospatial-reality-of-louisianas-new-coast-tim-osborn.pdf](https://louisianaview.wordpress.com/wp-content/uploads/2026/04/1_the-geospatial-reality-of-louisianas-new-coast-tim-osborn.pdf)



## ***Megan Williams***

*Meteorologist*

*NWS New Orleans/Baton Rouge Weather Forecast Office*

---

*Megan Williams is a general forecaster at the NWS Weather Forecast Office in New Orleans/Baton Rouge, LA. She has worked there for 8 years. Her primary responsibilities at the NWS New Orleans are to support the NWS mission of “protecting lives and property” by issuing weather forecasts, warnings, and disseminating weather, water, and climate data among other duties. She is currently the marine, public, and flash flood program leads for the NWS New Orleans Office. She has worked on regional and national teams to further the development of GIS services, products, and projects in the NWS. She has a Master’s Degree in Meteorology, a GIS Certificate, and Bachelor’s Degrees in Professional Meteorology from Mississippi State University.*

---

### ***Presentation Title:***

*Reshaping the SE Louisiana Coast and its impacts on NWS products and services*

### ***Link to Slides:***

[https://louisianaview.wordpress.com/wp-content/uploads/2026/04/2\\_nws\\_lagis\\_2026.pdf](https://louisianaview.wordpress.com/wp-content/uploads/2026/04/2_nws_lagis_2026.pdf)



## ***David Schlotzhauer***

*Meteorologist*

*NWS New Orleans/Baton Rouge Weather Forecast Office*

---

*David Schlotzhauer is a forecaster at the National Weather Service forecast office in Slidell, LA. He has held this position for 4 years. The primary responsibility here is supporting the NWS mission to protect life and property and enhance the national economy. Prior jobs include hydrologist at the Lower Mississippi River Forecast Center, Emergency Manager with the State of Louisiana, and several positions in the Environmental field. In his "free time" now, he is also an adjunct instructor in the Department of Geosciences' distance learning Applied Meteorology master's degree program at Mississippi State. Mr. Schlotzhauer has earned Bachelor of Science degrees in Life Sciences and Geological Engineering, both from the former University of Missouri - Rolla and a Master of Science degree in Applied Meteorology from Mississippi State University. He is a frequent presenter here at the workshop, going back to around 2010 during his tenure with GOHSEP and continuing off and on over the years.*

---

### ***Presentation Title:***

*Reshaping the SE Louisiana Coast and its impacts on NWS products and services*

### ***Link to Slides:***

[https://louisianaview.wordpress.com/wp-content/uploads/2026/04/2\\_nws\\_lagis\\_2026.pdf](https://louisianaview.wordpress.com/wp-content/uploads/2026/04/2_nws_lagis_2026.pdf)



## ***Mike Budde***

*Geographer*

U.S. Geological Survey (USGS) Earth Resources Observation and Science Center

---

*Mike Budde is a geographer at the US Geological Survey (USGS) Earth Resources Observation and Science Center in Sioux Falls, SD. Budde is the project manager for the Famine Early Warning Systems Network and acts as the USGS Liaison to the International Charter Space and Major Disasters. In addition to his role as an Executive Secretariat member of the Charter, he also functions as the Authorized User (AU) for the United States, which allows him to activate the Charter on behalf of emergency managers in the US and other countries without an AU, as needed.*

---

### ***Presentation Title:***

*From Activation to Aftermath: Expanding the HDDS and International Charter Support*

### ***Link to Slides:***

[https://louisianaview.wordpress.com/wp-content/uploads/2026/04/3\\_usgs-eo-charter-data-mining-workshop-june-4-2026.pdf](https://louisianaview.wordpress.com/wp-content/uploads/2026/04/3_usgs-eo-charter-data-mining-workshop-june-4-2026.pdf)



## ***Dan Opstal***

*Deputy Program Coordinator*

*USGS National Land Imaging (NLI) Program*

---

*Daniel W. Opstal is the Deputy Program Coordinator for the National Land Imaging (NLI) Program at the U.S. Geological Survey and the emeritus Executive Secretary of the Civil Applications Committee (CAC). Through the CAC, Dan engaged federal civil science/disaster remote sensing providers, marshaling defense and intelligence remote sensing to aid emergency managers and scientists alike. As Deputy PC, he helps coordinate the \$100M NLI Program, which operates the Landsat satellites and a vast archive of land imagery.*

*Dan's work spans multiple levels of government, including briefing the National Security Council and the President's Council of Advisors on Science and Technology. He holds degrees in education (EdD, Purdue), international affairs (BA, Emory University), business (MBA, Penn State), strategic studies (MS, US Army War College) and strategic intelligence (MS, National Intelligence University). A distinguished Army War College graduate and certified geospatial intelligence professional, Dan was a 2021-2022 General Robert H. Barrow fellow at Marine Corps University.*

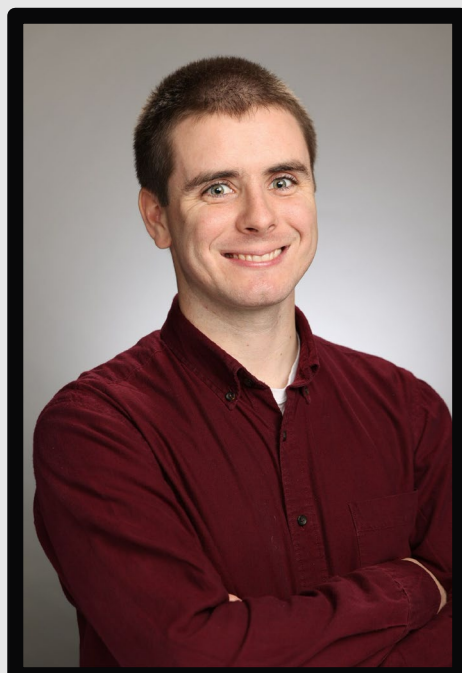
---

### ***Presentation Title:***

*National Land Imaging Program and Landsat Update*

### ***Link to Slides:***

[https://louisianaview.wordpress.com/wp-content/uploads/2026/04/4\\_danopstal-disaster-brief-national-land-imaging-june-2026.pdf](https://louisianaview.wordpress.com/wp-content/uploads/2026/04/4_danopstal-disaster-brief-national-land-imaging-june-2026.pdf)



## ***Ronan Lucey***

### *Research Scientist*

University of Alabama – Huntsville, NASA Marshall Space Flight Center (MSFC)

---

*Ronan Lucey is a Research Scientist with the University of Alabama in Huntsville positioned at NASA Marshall Space Flight Center. He has supported the NASA Disasters Program since 2019, including as an Associate Program Manager overseeing the Disasters PORTAL since 2025. Previously, he served as a Center Response Coordinator for the NASA Disasters Response Coordination System (DRCS), and has led numerous NASA Disasters Program event responses, including for the Hawaii Wildfires in 2023 and Hurricanes Eta and Iota in 2020. Additionally, he has led various Disasters Program stakeholder engagement efforts at local, state, and national levels, working to empower stakeholders with the tools and information that they need to reduce disaster risk, build resilience, improve response, and accelerate recovery in their communities. He enjoys connecting NASA's data, science, and expertise with stakeholders to collaboratively solve problems, ensuring informed and impactful decision-making.*

---

### ***Presentation Title:***

*The NASA Disasters Program*

### ***Link to Slides:***

[https://louisianaview.wordpress.com/wp-content/uploads/2026/04/5\\_ronanlucey\\_nasa\\_ladatamining2026.pdf](https://louisianaview.wordpress.com/wp-content/uploads/2026/04/5_ronanlucey_nasa_ladatamining2026.pdf)



## ***Kurtis Nelson***

*Physical Scientist*

*USGS EROS Fire Science Team*

---

*Kurtis Nelson is a physical scientist with the U.S. Geological Survey's Earth Resources Observation and Science Center in Sioux Falls, SD. He manages multiple wildfire-related programs both research and operational encompassing fire risk, fuels mapping, fire behavior modeling, burn severity mapping, post-fire recovery monitoring, fuel treatment effectiveness and more. He is also a qualified GIS Specialist on a National Complex Incident Management Team and for the Department of Interior National Burned Area Emergency Response Team.*

---

### ***Presentation Title:***

*Burn severity mapping for post-fire response and recovery*

### ***Link to Slides:***

[https://louisianaview.wordpress.com/wp-content/uploads/2026/04/6\\_knelson\\_la\\_disasterworkshop\\_20260604final.pdf](https://louisianaview.wordpress.com/wp-content/uploads/2026/04/6_knelson_la_disasterworkshop_20260604final.pdf)



## ***Jenny Hewson***

*LANCE Manager*

*NASA's Land, Atmosphere Near real-time Capability for Earth Observations (LANCE)*

---

*Jenny manages NASA's Land, Atmosphere Near real-time Capability for Earth Observations (LANCE), which delivers near real-time satellite data for time-sensitive applications such as air quality, storms, navigation, vegetation, and wildfires. She oversees daily operations and works with stakeholders to identify new products that enhance rapid decision making. Jenny also supports NASA's Fire Information for Resource Management System (FIRMS), a key component of LANCE, which provides active fire detections and contextual data for wildfire monitoring worldwide. She helps guide FIRMS' continued development by coordinating on new products, improving system capabilities, and leading outreach and capacity-building efforts for a diverse and expanding user community.*

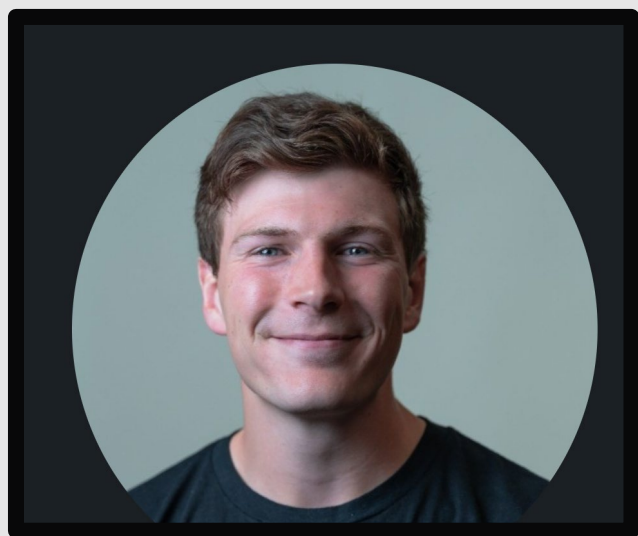
---

### ***Presentation Title:***

*NASA's Fire Information for Resource Management System (FIRMS): Informing Wildfire Monitoring through Earth Observations*

### ***Link to Slides:***

[https://louisianaview.wordpress.com/wp-content/uploads/2026/04/7\\_disaster-response-workshop-hewson-firms-2026-update.pdf](https://louisianaview.wordpress.com/wp-content/uploads/2026/04/7_disaster-response-workshop-hewson-firms-2026-update.pdf)



## ***George Femmer***

***CEO***

***Drone Institute***

---

*George Femmer is the Chief Executive Officer of Drone Institute, LLC, a venture capital-backed drone technology company headquartered in Lafayette, Louisiana. Under his leadership, Drone Institute has grown into a full-service operation spanning training and Part 107 certification, large-area aerial data capture, commercial drone inspection services, and AI-driven data processing and innovation — serving enterprise clients including Fortune 200 and Fortune 500 companies.*

---

### ***Presentation Title:***

*The Age of Sub-Inch Disaster Intelligence*

### ***Link to Slides:***

[https://louisianaview.wordpress.com/wp-content/uploads/2026/04/8\\_georgefemmer\\_disaster\\_expo\\_deck\\_v13.pdf](https://louisianaview.wordpress.com/wp-content/uploads/2026/04/8_georgefemmer_disaster_expo_deck_v13.pdf)



## *Jason Carr*

*Enterprise GIS Manager*

*Louisiana Department of Transportation and Development*

---

*Jason Carr is the Enterprise GIS Manager for LaDOTD. He provides the vision and overall management of the Enterprise GIS at LaDOTD as well as manages the GIS Unit within the Office of Planning, Data Collection and Management Systems Section (21). Since 2017, he has facilitated the modernization of LaDOTD's GIS including the development of a suite of web applications for emergency response during storm events impacting Louisiana. Prior to public service, he worked as a GIS consultant for 19 years and has over 26 years of GIS development and management expertise. He is a graduate of LSU with a Bachelor's of Science in Geography.*

---

### ***Presentation Title:***

*The Old & New of LaDOTD GIS/RS Updates*

### ***Link to Slides:***

[https://louisianaview.wordpress.com/wp-content/uploads/2026/04/9\\_ladotd-data-mining-workshop-2026.pdf](https://louisianaview.wordpress.com/wp-content/uploads/2026/04/9_ladotd-data-mining-workshop-2026.pdf)



## ***Maik Flanagin***

*GIS Lead*

*New Orleans District Geospatial Engineering Office - U.S. Army Corps of Engineers*

---

*Maik Flanagin is the GIS Lead of the Geospatial Engineering Office of the New Orleans District of the U.S. Army Corps of Engineers and technical lead for the FREEBOARD Emergency Management System. With Graduate degrees from MIT and UNO, he has worked for the Corps for 18 years. He is Louisiana's first and only professionally licensed software engineer.*

---

### ***Presentation Title:***

*FREEBOARD and ArcGIS Portal: A Tour of Software Systems used by the Corps of Engineers in Hurricane Response Operation*

### ***Link to Slides:***

[https://louisianaview.wordpress.com/wp-content/uploads/2026/04/10\\_usace\\_presentation\\_disaster\\_response\\_geospatial\\_data\\_mining\\_workshop.pdf](https://louisianaview.wordpress.com/wp-content/uploads/2026/04/10_usace_presentation_disaster_response_geospatial_data_mining_workshop.pdf)



## ***Jason Granados-Barrios***

### ***Geographer***

***New Orleans District Geospatial Engineering Office - U.S. Army Corps of Engineers***

---

*Jason Granados-Barrios serves as a Geographer within the Geospatial Engineering Office of the New Orleans District of the U.S. Army Corps of Engineers. Jason is native to Los Angeles, California and with graduate degrees from UCSB, CSULB, and USC, he has worked for the Corps for 2 years. Jason's responsibilities include geospatial analysis, cartography, geodatabase management, and GIS Web Applications. He is the Geographer on the front lines of New Orleans District flood fight, hurricane, and low water emergencies. His interests include emergency mitigation with GIS, cartography, GIS analysis, and informing communities the importance of GIS to be more spatially aware of our surroundings. When he is not focusing on GIS, he enjoys going to the gym and petting cats.*

---

### ***Presentation Title:***

***FREEBOARD and ArcGIS Portal: A Tour of Software Systems used by the Corps of Engineers in Hurricane Response Operation***

### ***Link to Slides:***

***[https://louisianaview.wordpress.com/wp-content/uploads/2026/04/10\\_usace\\_presentation\\_disaster\\_response\\_geospatial\\_data\\_mining\\_workshop.pdf](https://louisianaview.wordpress.com/wp-content/uploads/2026/04/10_usace_presentation_disaster_response_geospatial_data_mining_workshop.pdf)***



## ***Hazem Mahmoud***

### ***Project Scientist***

***NASA's Atmospheric Science Data Center (ASDC)***

---

*Dr. Hazem Mahmoud is the Project Scientist of NASA's Atmospheric Science Data Center (ASDC) under the RSES contract with a specialization in geophysics and environmental engineering. His expertise lies in the remote sensing of Earth's atmosphere, focusing on air quality monitoring from space and impact on health. Dr. Mahmoud's work centers on analyzing radiation budget, aerosol distribution, cloud formations, and the composition of the troposphere using both orbital and suborbital instruments. Passionate about making Earth observation data accessible to the global community, he is dedicated to advancing research on the impact of air quality on human health and the environment. He is very passionate about his work and the dissemination of actionable environmental data to support climate research and disaster response applications. Dr. Mahmoud is a strong advocate for NASA's open science policies, dedicated to making complex geophysical data science accessible and interoperable for the broader research and open to the world society.*

---

### ***Presentation Title:***

*Leveraging NASA Satellite Data for Operational Disaster Decision Support*

### ***Link to Slides:***

[https://louisianaview.wordpress.com/wp-content/uploads/2026/04/11\\_hazemmahmoud\\_disaster\\_workshop\\_v2.pdf](https://louisianaview.wordpress.com/wp-content/uploads/2026/04/11_hazemmahmoud_disaster_workshop_v2.pdf)



## ***Joseph "Brig" Bowles***

*Senior Solutions Engineer*

*Esri*

---

*Joseph Brigham Bowles is a Senior Solutions Engineer on the State and Local Government team out of the Esri San Antonio office. He has been with Esri for over 30 years, focusing mainly on the technical side of the sales process. His experience is in helping companies and individuals get their data into a spatial format to better find answers to questions. His areas of expertise include web mapping, server-based GIS, developer technologies, and making spatial technology available to everyone.*

---

### ***Presentation Title:***

*Widgets, Widgets, Widgets in ArcGIS Experience Builder*

### ***Vendor Booth Videos:***

*The Science of Where - Unlock Data's Full Potential*

*Applying The Science of Where*

*The Esri Geospatial Cloud*

*Exploring The Science of Where*

*The Power of Smart Maps in Times of Crises*



## ***Greg Hymel***

*Senior Account Manager*

*Esri*

---

*Greg Hymel is a Senior Account Manager for Esri's State & Local Government practice across Louisiana. With nearly 30 years of experience in GIS and business development, Greg has supported governments both as a civil servant and as an Esri Business Partner throughout his career. He serves as a trusted advisor helping organizations modernize operations and maximize the value of the ArcGIS platform, guiding them beyond traditional GIS workflows toward enterprise-wide geospatial capabilities that improve decision making and service delivery. A lifelong resident of Louisiana, Greg holds both a Master's and Bachelor's degree in Geography from University of New Orleans.*

---

### ***Presentation Title:***

*Widgets, Widgets, Widgets in ArcGIS Experience Builder*

### ***Vendor Booth Videos:***

*The Science of Where - Unlock Data's Full Potential*

*Applying The Science of Where*

*The Esri Geospatial Cloud*

*Exploring The Science of Where*

*The Power of Smart Maps in Times of Crises*



## ***Trish Zwolinski***

*Account Manager*

Esri

---

*With a foundation in marine biology and conservation, Trish brings a science driven perspective to partnering with state and local governments. She supports agency leaders in assessing risk and applying data informed strategies to proactively address challenges impacting communities. Her work emphasizes translating complex information into clear, actionable insights that enable confident, informed decision making across government organizations.*

---

### ***Presentation Title:***

*Widgets, Widgets, Widgets in ArcGIS Experience Builder*

### ***Vendor Booth Videos:***

*The Science of Where - Unlock Data's Full Potential*

*Applying The Science of Where*

*The Esri Geospatial Cloud*

*Exploring The Science of Where*

*The Power of Smart Maps in Times of Crises*

25 ~ Disaster Workshop

*Data Links*

27<sup>th</sup> Annual

*Disaster Response & Geospatial Data Mining Workshop*

*For Geospatial First Responders*

**NOAA**

2026

NOAA NHC: <https://www.nhc.noaa.gov/>

NOAA NGS Remote Sensing Imagery (Post Storm Collections):

<https://oceanservice.noaa.gov/hazards/emergency-response-imagery.html>

Emergency Response Imagery: <https://storms.ngs.noaa.gov/>

NOAA Navigation Response and Surveying Resources and Program:

<https://nauticalcharts.noaa.gov/updates/category/navigation-response-teams/>

26 ~ Disaster Workshop

**Data Links**27<sup>th</sup> Annual**Disaster Response & Geospatial Data Mining Workshop***For Geospatial First Responders***National Weather Service**

2026

National Weather Service Data as OGC Web Services on the public Cloud: <https://www.weather.gov/gis/cloudgiswebservices>

Storm Prediction Center Severe Outlook:  
<https://www.spc.noaa.gov/wcm/>

NHC Hurricane Products:  
<https://www.nhc.noaa.gov/gis/>

NWS GIS Portal: <https://www.weather.gov/gis/>

- [CloudGIS Web Services](#)
- [Basemaps](#)

National GIS Viewer:

<https://viewer.weather.noaa.gov/general#layers=42904+40090+41783+42464+41782+41781+41609+41806+41818+41816&x=-116.0838&y=44.8895&z=5.7&panel=legend>

National Radar Application:  
<https://radar.weather.gov/>

27 ~ Disaster Workshop

Data Links

27<sup>th</sup> Annual

**Disaster Response & Geospatial Data Mining Workshop**

*For Geospatial First Responders*

**National Weather Service**

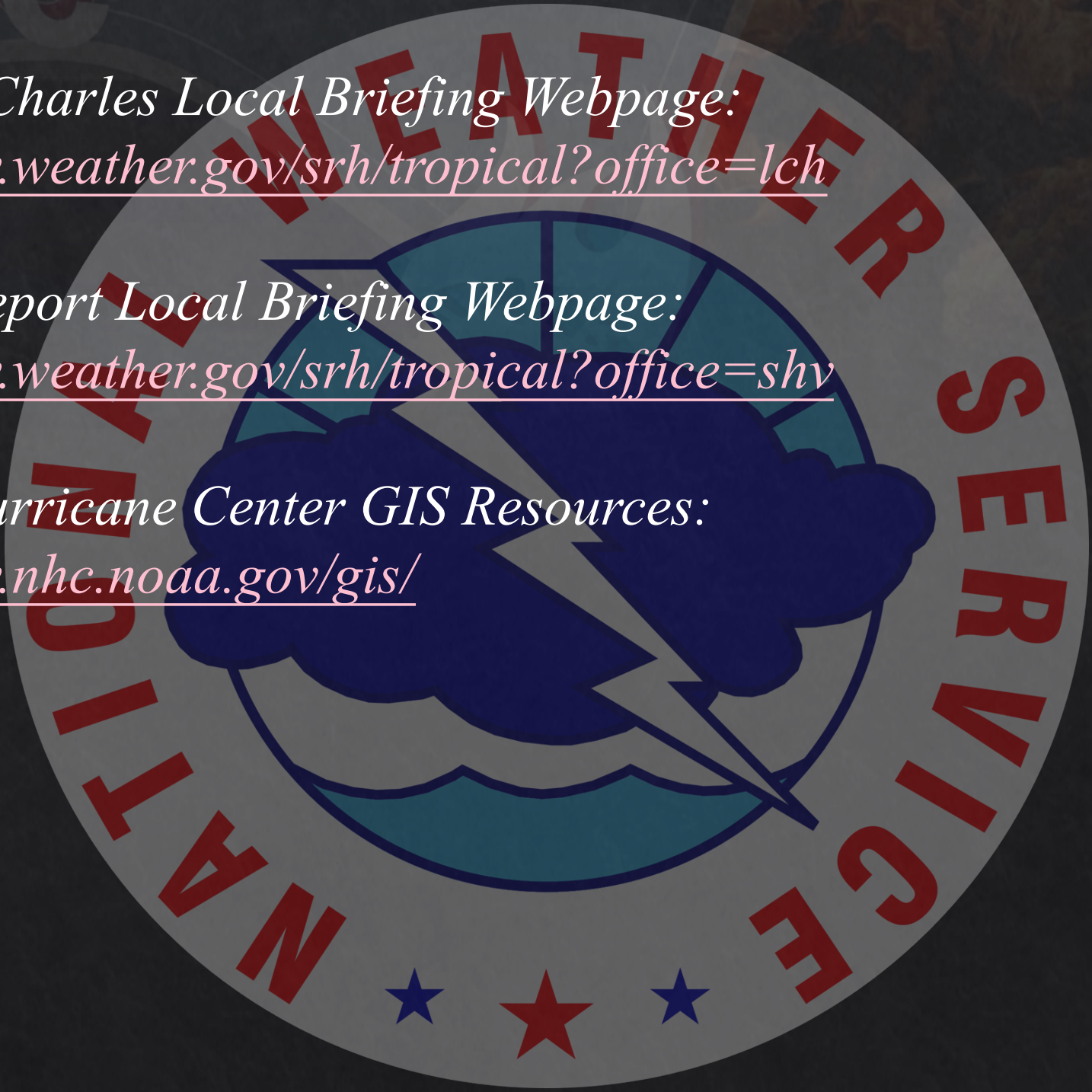
2026

NWS New Orleans Local Briefing Webpage:  
<https://www.weather.gov/srh/tropical?office=lix>

NWS Lake Charles Local Briefing Webpage:  
<https://www.weather.gov/srh/tropical?office=lch>

NWS Shreveport Local Briefing Webpage:  
<https://www.weather.gov/srh/tropical?office=shv>

National Hurricane Center GIS Resources:  
<https://www.nhc.noaa.gov/gis/>



28 ~ Disaster Workshop

*Data Links*

27<sup>th</sup> Annual

*Disaster Response & Geospatial Data Mining Workshop*

*For Geospatial First Responders*

*U.S. Geological Survey*

2026

*Emergency Operations Portal:*

<https://www.usgs.gov/emergency-operations-portal>

*Hazards Data Distribution System (HDDS):*

<https://hddsexplorer.usgs.gov/>

*Collection Management Tool (CMT):* <https://cmt.usgs.gov/>

*International Charter Space and Major Disasters:*

<https://disasterscharter.org/>

**USGS**  
*science for a changing world*

29 ~ Disaster Workshop

Data Links

27<sup>th</sup> Annual

**Disaster Response & Geospatial Data Mining Workshop**

*For Geospatial First Responders*

**U.S. Geological Survey**

2026

National Land Imaging Program: <https://www.usgs.gov/programs/national-land-imaging-program>

Landsat Missions: <https://www.usgs.gov/landsat-missions>

USGS Landsat Next: <https://www.usgs.gov/landsat-missions/landsat-10>

Landsat Next Original Architecture

Factsheet: <https://pubs.usgs.gov/fs/2024/3005/fs20243005.pdf>

- Mission parameters are currently under review

Landsat Science Products: <https://www.usgs.gov/landsat-missions/landsat-science-products>

Landsat: Products & Services from the USGS – Webinar, September 2023:  
<https://youtu.be/3zs58yWswe8?si=ckbgOOOfEBM44-jA>

USGS NUSO:

<https://www.usgs.gov/programs/national-land-imaging-program/science/national-uncrewed-systems-office>

27<sup>th</sup> Annual

**Disaster Response & Geospatial Data Mining Workshop**

For Geospatial First Responders

**U.S. Geological Survey**

2026

*Landsat Applications:*

*Landfire:* <https://www.landfire.gov/>

*Landsat Wildfire factsheet:*

[https://pubs.usgs.gov/fs/2016/3044/fs20163044\\_2.pdf](https://pubs.usgs.gov/fs/2016/3044/fs20163044_2.pdf)

*Landsat Burned Area Science Product:*

<https://pubs.usgs.gov/fs/2022/3083/fs20223083.pdf>

*LANDFIRE YouTube Videos:*

<https://www.youtube.com/user/LANDFIREvideo>

*LANDFIRE: What is LANDFIRE factsheet:*

<https://pubs.usgs.gov/fs/2023/3044/fs20233044.pdf>

*LANDFIRE Data and Applications:*

<https://pubs.usgs.gov/fs/2022/3034/fs20223034.pdf>

*Burn Severity Portal:* <https://burnseverity.cr.usgs.gov/products/baer>

*Burn Severity Portal Viewer:* <https://burnseverity.cr.usgs.gov/viewer/>

*Burn Severity Data Mapping Request:*

<https://burnseverity.cr.usgs.gov/rfmapp/baer>

*Fire Danger Forecast:* <https://www.usgs.gov/fire-danger-forecast>

*QGIS Fire Mapping Tool:* <https://mtbs.gov/qgis-fire-mapping-tool>

31 ~ Disaster Workshop

*Data Links*

27<sup>th</sup> Annual

**Disaster Response & Geospatial Data Mining Workshop**

*For Geospatial First Responders*

**U.S. Geological Survey**

2026

*Landsat State Factsheets:*

- Texas: <https://pubs.usgs.gov/fs/2021/3017/fs20213017.pdf>
- Louisiana: <https://pubs.usgs.gov/fs/2022/3059/fs20223059.pdf>
- Mississippi: <https://pubs.usgs.gov/fs/2022/3062/fs20223062.pdf>
- Alabama: <https://pubs.usgs.gov/fs/2022/3060/fs20223060.pdf>
- Georgia: <https://pubs.usgs.gov/fs/2022/3039/fs20223039.pdf>
- Florida: <https://pubs.usgs.gov/fs/2022/3019/fs20223019.pdf>

*Interactive Viewer:* <https://dmsdata.cr.usgs.gov/lidarmonitoring/viewer/>

**USGS**  
science for a changing world

32 ~ Disaster Workshop

**Data Links**

27<sup>th</sup> Annual

**Disaster Response & Geospatial Data Mining Workshop**

*For Geospatial First Responders*

**NASA Disasters Program**

2026

NASA Disasters Mapping Portal: <https://maps.disasters.nasa.gov>

NASA Disasters Program

Overview: <https://appliedsciences.nasa.gov/what-we-do/disasters>

To sign up for Disasters Portal Beta Testing or to connect with the speaker from the NASA Disasters Program: [ronan.m.lucey@nasa.gov](mailto:ronan.m.lucey@nasa.gov)

To request support from the NASA Disasters Response Coordination System: [drcs@nasa.gov](mailto:drcs@nasa.gov)

Join the NASA Disasters Program mailing list and receive our community newsletter and other important updates: <https://lp.constantcontactpages.com/su/tn3iEZN>

27<sup>th</sup> Annual

**Disaster Response & Geospatial Data Mining Workshop**

For Geospatial First Responders

## NASA FIRMS

2026

FIRMS Tools: <https://www.earthdata.nasa.gov/data/tools/firms>

FIRMS Global Mapper: <https://firms.modaps.eosdis.nasa.gov/>

FIRMS US/Canada Mapper:  
<https://firms.modaps.eosdis.nasa.gov/usfs/map/>

FIRMS Tutorials: <https://firms.modaps.eosdis.nasa.gov/tutorials/>

To sign up for FIRMS Alerts: <https://firms.modaps.eosdis.nasa.gov/alerts/>

FIRMS Blog on Earthdata: <https://www.earthdata.nasa.gov/news/blog>,  
Search FIRMS

FIRMS Blog (legacy):  
<https://wiki.earthdata.nasa.gov/pages/viewrecentblogposts.action?key=FIRMS>  
RMS

27<sup>th</sup> Annual

**Disaster Response & Geospatial Data Mining Workshop**

For Geospatial First Responders

**NASA Earthdata**

2026

NASA Worldview to visualize and browse imagery:

<https://worldview.earthdata.nasa.gov/>

Worldview Tutorial: <https://www.youtube.com/watch?v=uMkuiRJr-E>

Earthdata GIS Resource: <https://www.earthdata.nasa.gov/learn/gis>

Earthdata GIS Tutorials:

<https://www.youtube.com/playlist?list=PLO2yB4LGNIWowMYh8wJWDu3oMGbN1GGNN>

Earthdata Search/Download Data: <https://search.earthdata.nasa.gov/>

Earthdata Portal: <https://gis.earthdata.nasa.gov/portal/home/>

Python Library for NASA Earthdata: <https://github.com/earthaccess-dev/earthaccess>

Earthdata Forum: <https://forum.earthdata.nasa.gov/>

35 ~ Disaster Workshop

**Data Links**27<sup>th</sup> Annual**Disaster Response & Geospatial Data Mining Workshop***For Geospatial First Responders***LA Department of Transportation and Development****2026***RESTService Links**Road Closures – Feature/Map Services, Bridges – Posted bridges Signal Status, Bridge Status, Basemap**OpenData – Boundaries, Census, GNIS, NHD, NWI, PLS**Roads & Highways Data (Open Data) – Federal Aid, Functional System (has Urban/Rural classification and codes),**Export Network Utility Services:**<https://maps.dotd.la.gov/HurricaneDataMining/restserviceslinks.htm>**OpenData Website – Transportation, Landcover, Boundaries, PLS, Hydrography, Structures, Elevation: <https://data-ladotd.opendata.arcgis.com/>**Imagery RESTServices: <https://maps.dotd.la.gov/imagery/rest/services/>**Roads & Highways Data:**[https://maps.dotd.la.gov/DataDictionary/Roads N Highways/metadata.Htm](https://maps.dotd.la.gov/DataDictionary/Roads_N_Highways/metadata.Htm)**Imagery Download App:**<https://maps.dotd.la.gov/portal/apps/webappviewer/index.html?id=ddad9f0bc5a247bc8316899a6d49cb3e>**Traveler Information – 511: <https://www.511la.org/>*

36 ~ Disaster Workshop

*Data Links*

27<sup>th</sup> Annual

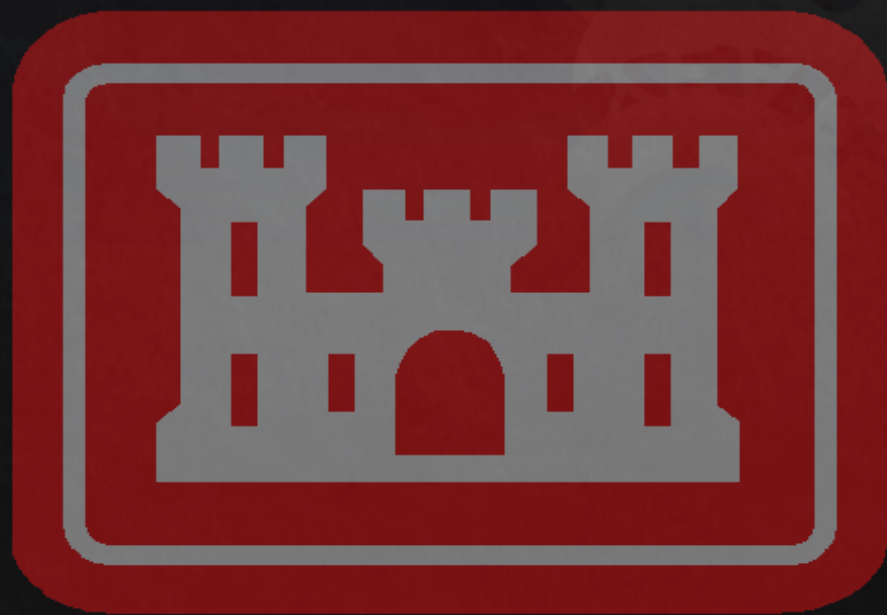
**Disaster Response & Geospatial Data Mining Workshop**

*For Geospatial First Responders*

**US Army Corps of Engineers**

2026

USACE Open Public GIS Data: <https://geospatial-usace.opendata.arcgis.com/>



**US Army Corps  
of Engineers®**

37 ~ Disaster Workshop

Data Links

27<sup>th</sup> Annual

**Disaster Response & Geospatial Data Mining Workshop**

For Geospatial First Responders

ESRI

2026

Widgets, Widgets, Widgets in Experience Builder:

<https://arcg.is/190myi>

ArcGIS Experience Builder Tutorials:

<https://learn.arcgis.com/en/gallery/#?p=arcgisexperiencebuilder>

ArcGIS Online Workspace: <http://www.arcgis.com/>

Unlocking the Power of ArcGIS Dashboards:

<https://arcg.is/1CGerW0>

ESRI Living Atlas of the World:

<https://livingatlas.arcgis.com/en/home/>

Help Build the Living Atlas:

<https://livingatlas.arcgis.com/en/contributions/>

Help Improve Esri Maps: <https://communitymaps.arcgis.com/home/>

Esri Disaster Response Program (DRP): <https://www.esri.com/en-us/disaster-response/overview>

27<sup>th</sup> Annual

**Disaster Response & Geospatial Data Mining Workshop**

For Geospatial First Responders

ESRI

2026

*Best Practices for Sharing to the Living Atlas:*

<https://doc.arcgis.com/en/arcgis-online/reference/best-practices-share.htm>

*ArcGIS Living Atlas Ready-To-Use Imagery Layers for Analysis:*

<https://www.esri.com/arcgis-blog/products/arcgis-living-atlas/imagery/law-imagery-layers-for-analysis>

*Open Street Map Vector Basemaps: OSM Daylight Distribution:*

<https://daylightmap.org/>

*Explore Imagery:*

<https://livingatlas.arcgis.com/wayback/#active=25285&mapCenter=-115.29850%2C36.06400%2C14&mode=explore>

*Explore Emergency Response ACS in the Living Atlas:*

<https://livingatlas.arcgis.com/en/browse/#d=2>

*Emergency Management Operations Solution: <https://arcg.is/1LWDPu>*

*Damage Assessment Solution: <https://arcg.is/0uu1iy>*

39 ~ Disaster Workshop

Data Links

27<sup>th</sup> Annual

**Disaster Response & Geospatial Data Mining Workshop**

For Geospatial First Responders

ESRI

2026

Esri Living Atlas Live Feeds:

[https://livingatlas.arcgis.com/en/browse/?q=live%20feeds%20by%20@esri\\_livefeeds2#d=2&q=live+feeds+by+%40esri\\_livefeeds2&type=layers](https://livingatlas.arcgis.com/en/browse/?q=live%20feeds%20by%20@esri_livefeeds2#d=2&q=live+feeds+by+%40esri_livefeeds2&type=layers)

Imagery Content: <https://www.esri.com/en-us/capabilities/imagery-remote-sensing/capabilities/content>

Extend the Reach of your GIS: [Extend the Reach of your GIS: chrome-extension](#)

Essential Configurations for Highly Scalable ArcGIS Online Web Applications (Viral Applications): <https://www.esri.com/arcgis-blog/products/arcgis-online/data-management/essential-configurations-for-highly-scalable-arcgis-online-web-applications-viral-applications>

Moving to Experience Builder: <https://community.esri.com/t5/arcgis-experience-builder-blog/what-are-the-current-plans-for-arcgis-web/ba-p/1214064>



*Now we ask that you do something for us!  
Please take just a moment and help our future  
workshops by participating in our survey*

***Survey link:***

<https://forms.office.com/r/wBcsS5r9DC>

***Website link:***

<https://louisianaview.wordpress.com/2026/04/27/2026-disaster-response-workshop/>

# Thank you for attending the 27<sup>th</sup> Annual Disaster Response/Data Mining Geospatial Workshop

## *A Note from the Coordination Team:*

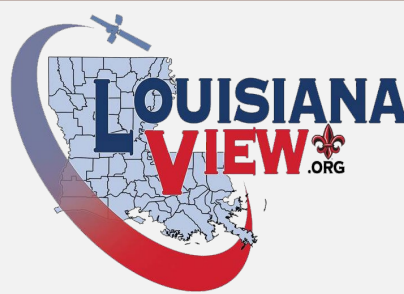
*On behalf of the 27<sup>th</sup> Annual workshop team hosting this year's event, I want to thank all our speakers, sponsors and those participating in the event. Without each of you, this workshop and the successful response effort that is put forth each year during disaster events would not be possible.*



*Geospatial First Responders are the silent heroes battling on the front lines for data acquisition, development, product deployment, and analysis for each disaster event. Because of all your combined talent, our response to these disasters gets quicker, more effective, more productive, and more connected as we move forward. Keep up the great work, keep moving forward and we will be ready for the next disaster event. After all, it's not whether we will get another event, it is just where will it occur! An informed network of geospatial first responders spanning the region –across the states, the Gulf, the Caribbean, and all surrounding areas will always be our best defense. Thank you again and we look forward to “seeing” each of you next year, whether face-to-face or in the virtual world. Until then, like you, we will await the next “Events” arrival.*

*All the best,  
Rodney B. Yantis, MLA*

**NOTE: The 28<sup>th</sup> Annual Disaster Response/Data Mining Geospatial Workshop will be held on June 3, 2027. Mark your calendars now!**



# Meet Our 2026 Sponsors!



Andy Hollerman, Award-Winning Barbecue



Surveyors | Engineers | Environmental Consultants

Regional Application Center: <https://rac.louisiana.edu/>

LouisianaView: <https://louisianaview.wordpress.com/>

U.S. Geological Survey (USGS): <https://www.usgs.gov/>

Acadian Ambulance: <https://acadianambulance.com/>

Community Coffee: <https://www.communitycoffee.com/>

Drone Institute: <https://droneinstitute.ai/>

Eagleview: <https://www.eagleview.com/>

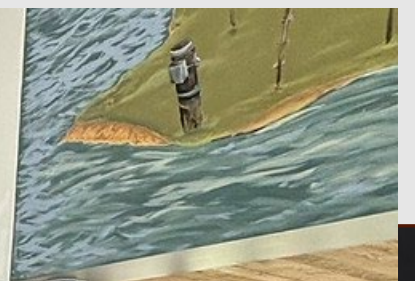
Esri: <https://www.esri.com/en-us/home>

Fenstermaker: <https://www.fenstermaker.com/>

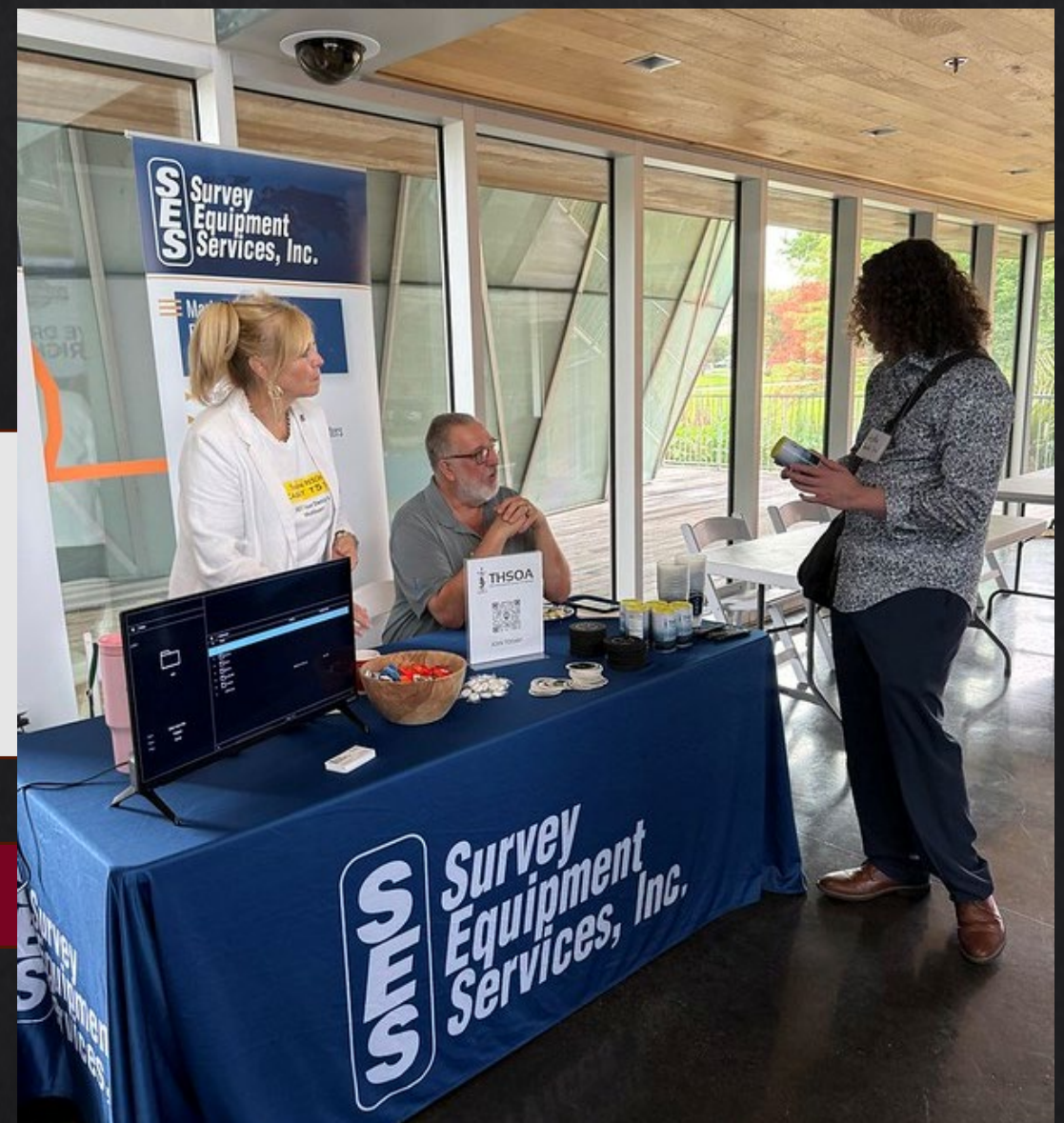
Seiler Geospatial: <https://www.seilergeo.com/>

Survey Equipment Services, Inc.: <https://ses-services.com/>

# Visiting the Vendors!



# Visiting the Vendors!



# DAY 1 at LITE Center







**Disaster Response & Data Mining  
Geospatial Workshop**  
UL Lafayette Regional Application Center  
June 4, 2026

---

\*Start time is 9:00 am CDT / 14:00 UTC

**Location:** LITE Center, 537 Cajundome Blvd

- 9:00 am Welcome and Introductions  
Rodney Yantis, M.A. & Courtney Poirier Chicola, PhD, UL Lafayette RAC  
Michelle Fischer, U.S. Geological Survey (USGS)  
Rusti Liner, River Parishes Community College
- 9:20 am *Time Is Of The Essence, Action and Response Is Wherever You Are, A New Generation Of Autonomous Technology and Deployment Is Here Now* – Tim Osborn, NOAA Office of Coast Survey
- 9:50 am *Reshaping the SE Louisiana Coast and its impacts on NWS products and services* – Megan Williams & David Schlotzhauer, NWS New Orleans & Lake Charles Offices
- 10:20 am Break [Grab a snack and visit vendors]
- 10:40 am *From Activation to Aftermath: Expanding the HDDS and International Charter Support* – Mike Budde, USGS EROS & International Charter
- 11:30 am *National Land Imaging Program and Landsat Update* – Dan Opstal, USGS NLI [VIRTUAL]
- 12:00 pm Lunch – provided by sponsors
- 1:15 pm *The NASA Disasters Program* – Ronan Lucey, NASA MSFC [VIRTUAL]
- 1:45 pm *Burn severity mapping for post-fire response and recovery* – Kurtis Nelson, USGS Fire Science Team
- 2:15 pm *NASA's Fire Information for Resource Management System (FIRMS): Informing Wildfire Monitoring through Earth Observations* – Jenny Hewson, NASA's Land, Atmosphere Near real-time Capability for Earth Observations (LANCE) [VIRTUAL]
- 2:40 pm Break [Grab a snack and visit vendors]
- 3:00 pm *The Age of Sub-Inch Disaster Intelligence* – George Femmer, Drone Institute
- 3:30 pm *The Old & New of LaDOTD GIS/RS Updates* – Jason Carr, LA DOTD
- 4:00 pm *FREEBOARD and ArcGIS Portal: A Tour of Software Systems used by the Corps of Engineers in Hurricane Response Operation* – Maik Flanagan & Jason Granados-Barrios, USACE
- 4:30 pm *Leveraging NASA Satellite Data for Operational Disaster Decision Support* – Hazem Mahmoud, NASA's Atmospheric Science Data Center (ASDC) [VIRTUAL]
- 5:00 pm Day 1 Wrap Up [Visit vendors]  
Continue the fun and networking at Mappy Hour – Adopted Dog Brewing



# DAY 1 at LITE Center



# Mappy Hour Networking Event at Adopted Dog Brewing



Louisiana



## Mappy Hour

Thursday, June 4  
Starting immediately after Workshop  
Adopted Dog Brewing  
329 Dulles Drive, Lafayette, LA 70506



Disaster Response/Data  
Mining Geospatial  
Workshop



# Day 2 GIS Training Session



***Remember the Moment!***

***Want to see more pictures from this year's  
workshop?  
Click on the link below!***

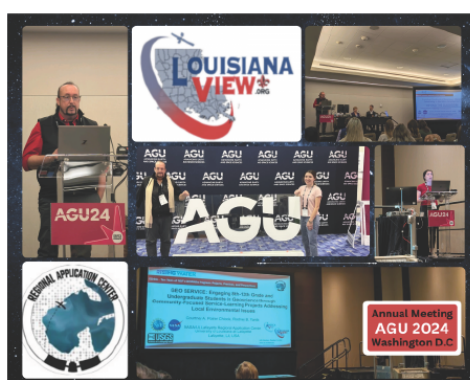
**<https://flic.kr/s/aHBqjCX2PA>**

# Support the RAC!

## Support the Regional Application Center!

Your financial support will enable the Regional Application Center to share the love of earth observation & geoscience education with students by providing an immersive experience in studying the geosciences, environmental monitoring and STEM education with community engagement.

- Rising Waters GEOSERVICE Summer Workshop for 7th -12th graders
- Disaster Response Geospatial Data Workshop
- 'Earth as Art' Travelling Exhibit
- Earth Observation Day
- GIS Day



### Make a Gift

If you would like to donate to our center, follow the link to the University of Louisiana at Lafayette Foundation - **Regional Application Center Account #18164**

\*Please put the foundation account number in the Designation Box.

### Get Involved

If you are interested in sponsoring one of our outreach activities, please contact Dr. Courtney Poirier Chicola ([chicola@louisiana.edu](mailto:chicola@louisiana.edu)) or Mr. Rodney Yantis, MLA ([yantis@louisiana.edu](mailto:yantis@louisiana.edu))

